

Welcome – PMI New Mexico



Leading with Purpose

Beyond certifications to
Management Qualifications

ducere.education



Mathew Jacobson
President & Founder,
Kennedy University & Dūcere Global Business School



LLB, Hons
BA, Hons
Harvard University, Leading Global Business
UCLA, GAAP
Aspen Institute Alumni



If you could,
would you hire this man?

According to an Article in USA Today, 2003

The answer is NO

What % of jobs require a university degree?

35%

55%

75%

“By 2031, we estimate that 72 percent of jobs will require postsecondary education or training” Forbes

Call me Ishmael. Some years ago, never mind how long precisely, having little or no money in my purse and nothing particular to interest me on shore, I thought I would sail about a little and see the watery part of the world. It is a way of driving off the spleen and regulating the circulation. Whenever I find myself growing grim about the mouth; whenever it is a damp, drizzly November in my soul; whenever I find myself involuntarily pausing before coffin warehouses, and bringing up the rear of every funeral I meet; and especially whenever my hypos gets such an upper hand of me, that it requires a strong moral principle to prevent me from deliberately stepping into the street, and methodically knocking people's hats off—then, I account it high time to get to sea as soon as I can. and methodically knocking people's hats off—then, I account it high time to get to sea as soon as I can.



Call me Ishmael. Some years ago, never mind how long precisely, having little or no money in my purse, and nothing particular to interest me on shore, I thought I would sail about a little and see the watery part of the world.

It is a way I have of driving off the spleen, and regulating the circulation. Whenever I find myself growing grim about the mouth; whenever it is a damp, drizzly November in my soul;

- Moby Dick



DUCERE
GLOBAL BUSINESS SCHOOL

How did you arrive to PMI
New Mexico?





DUCERE
GLOBAL BUSINESS SCHOOL

What is the definition of Commence?

How Long Does it Take The Majority of Students to Complete a 4 Year College Degree?

4 Years

4 ½ Years

5 ½ Years

Never



HOW MUCH DOES THE AVERAGE DEGREE COST IN THE US?

Clue: Not talking top 100, There are 5000 Colleges in the US

\$40,00

\$85,000

\$120,000

\$250,000



How much more can you earn with a masters degree over no degree

50%

90%

150%

200%



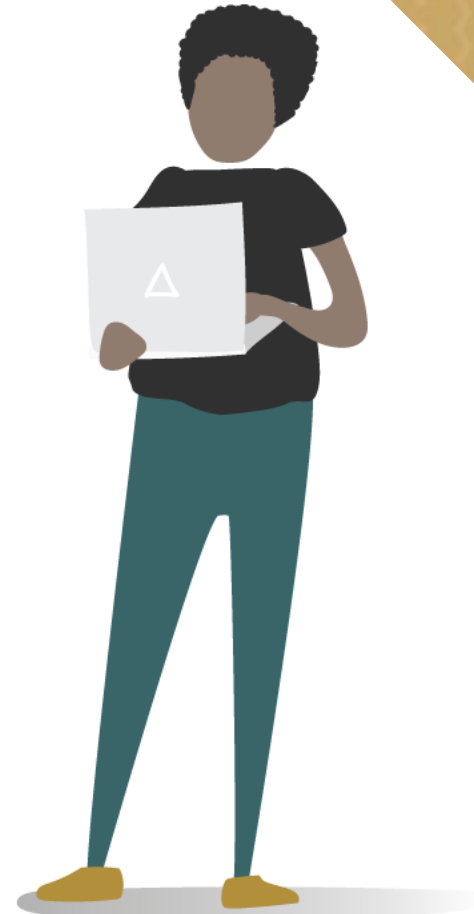
National Center for Education Statistics

Minorities and HE

What % of African Americans have advanced degrees?

What is the lowest demographic in the US for Masters degrees?

- Latino Men
- Black Women
- Native American
- Latino Women



The Gender Gap

93% of Fortune 500 CEO's are men

80.8% of Board members and senior leadership are women

0% of Heads of State in the US, Women

“All men are created equal”

– US Declaration of Independence



The Value of a Degree?

“A Masters Degree has an average earnings of almost double only a High School Diploma”

- *US Bureau of Labor Statistics*

“A Bachelors Degree earns almost 50% higher life-time earnings than High School only”

- *US Bureau of Labor Statistics*





DUCERE
GLOBAL BUSINESS SCHOOL

**We have solved the Diversity issue in America!!
We have solved Gender Equity in the US!!**

SOLUTION IS SIMPLE, RIGHT?

Just get more PMI Members to complete a post graduate education

NO – The solution is not simple

Extensive barriers to traditional university degrees

- **Time:** (5.5 years to complete a 4 year degree). Then a 2 year Masters.
- **Entry:** (GPA, SAT, GMAT, FASFA, Loans... ARGGGHH!!!)
- **Relevance:** (Algebra, Calculus, medieval history, dance!)
- **Cost:** Average US college degree is \$120,000 – Average MBA \$60,000

TOTAL COST: \$180,000 “Average”

TOTAL TIME: 8 years to Achieve a Masters

PMI & Ducere - Breaking Down ALL Entry Barriers

The PMI MBA

- Open Access - allow students to enter an MBA with NO bachelors degree, based on their PMP
- Accelerated - MBA completion in just 12 months while still working full time
- Tailor MBA's directly to company strategic outcomes
- PMP Provides MBA credits. Only need to complete 4 Classes
- 100% Online
- No Exama – All Assignments are 100% project based
- PMI MBA, Scholarships. Tuition for PMI members from as low as \$9,000



Degrees Awarded by leading universities around the world



**University of
East London**



University of Wales
Trinity Saint David



Valencian
International
University



**TORRENS
UNIVERSITY**
AUSTRALIA



**ROME
BUSINESS
SCHOOL**



**UNIVERSITY OF
MAURITIUS**



Global Leaders Faculty

The shared wisdom and experience of over 250 of the world's most inspiring leaders is integrated within and fundamental to, all our degree programs.



Archbishop Desmond Tutu
Nobel Peace Prize Laureate



Baroness Valerie Amos PC
Under-Secretary-General,
United Nations



Mrs Abby J. Cohen
Chief Investment
Strategist, Goldman Sachs



General David Petraeus
Director, Central Intelligence
Agency (2011-2012)



Ms Kay Koplovitz
Founder, USA Networks



Mayor David Dinkins
First African American Mayor
of New York City (1990-1994)



Julia Gillard AC
Prime Minister, Australia
(2010-2013)



Prof. Daniel C. Esty
Director, Centre for Business
& the Environment, Yale



Honorable Michael Kirby
President, United Nations
Human Rights Council



Mr Michael Andrew
Global Chairman, KPMG,
International (2011-2014)

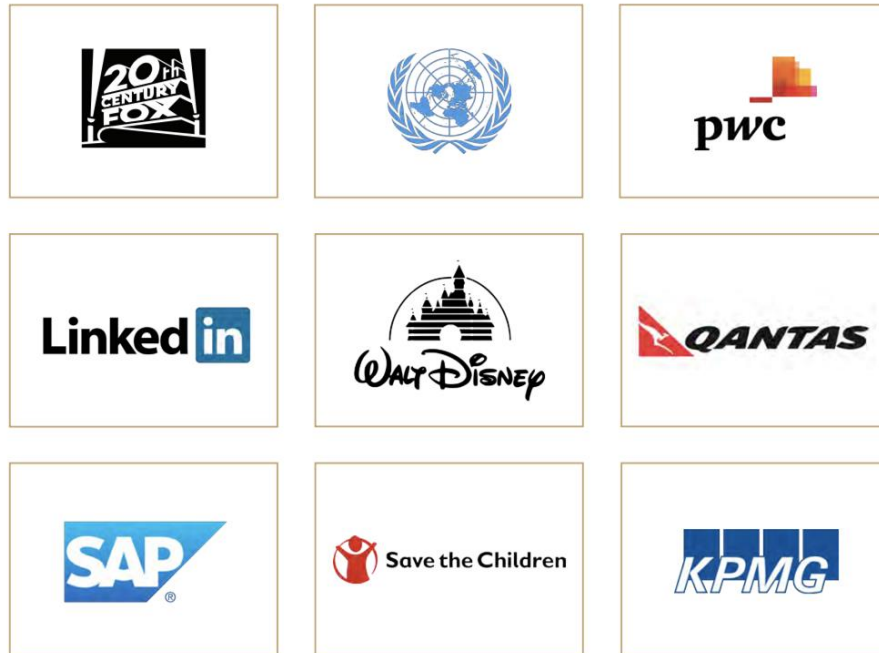


Prof. Muhammad Yunus
Nobel Peace Prize Laureate



Baroness Susan Greenfield
CBE Member, House of Lords,
Professor, Oxford University

TAILORED ENTERPRISE DEGREES



“ The most unique MBA in the world...
focusing on real industry problems

THE AUSTRALIAN
FOR THE INFORMED AUSTRALIAN

Case Studies



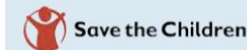
Project Case Study

Determine how a leading professional services firm should engage with start-ups and the start-up community. Scope and consider structured approaches based on survey data, industry trends, and benchmarks.



Project Case Study

Investigate tangible opportunities for Artificial Intelligence (AI) in the professional services sector and make recommendations on how professional services firms could capitalize on this emerging technology.



Project Case Study

Identify and review key organizational communication assets and develop value proposition for both philanthropic and corporate partners.



THE RESULTS

TRADITIONAL HIGHER ED

\$180,000

8 years

Exams & Essays

V's

PMI MBA

from \$9,000

1 Year

Applied Projects

Transformational Change

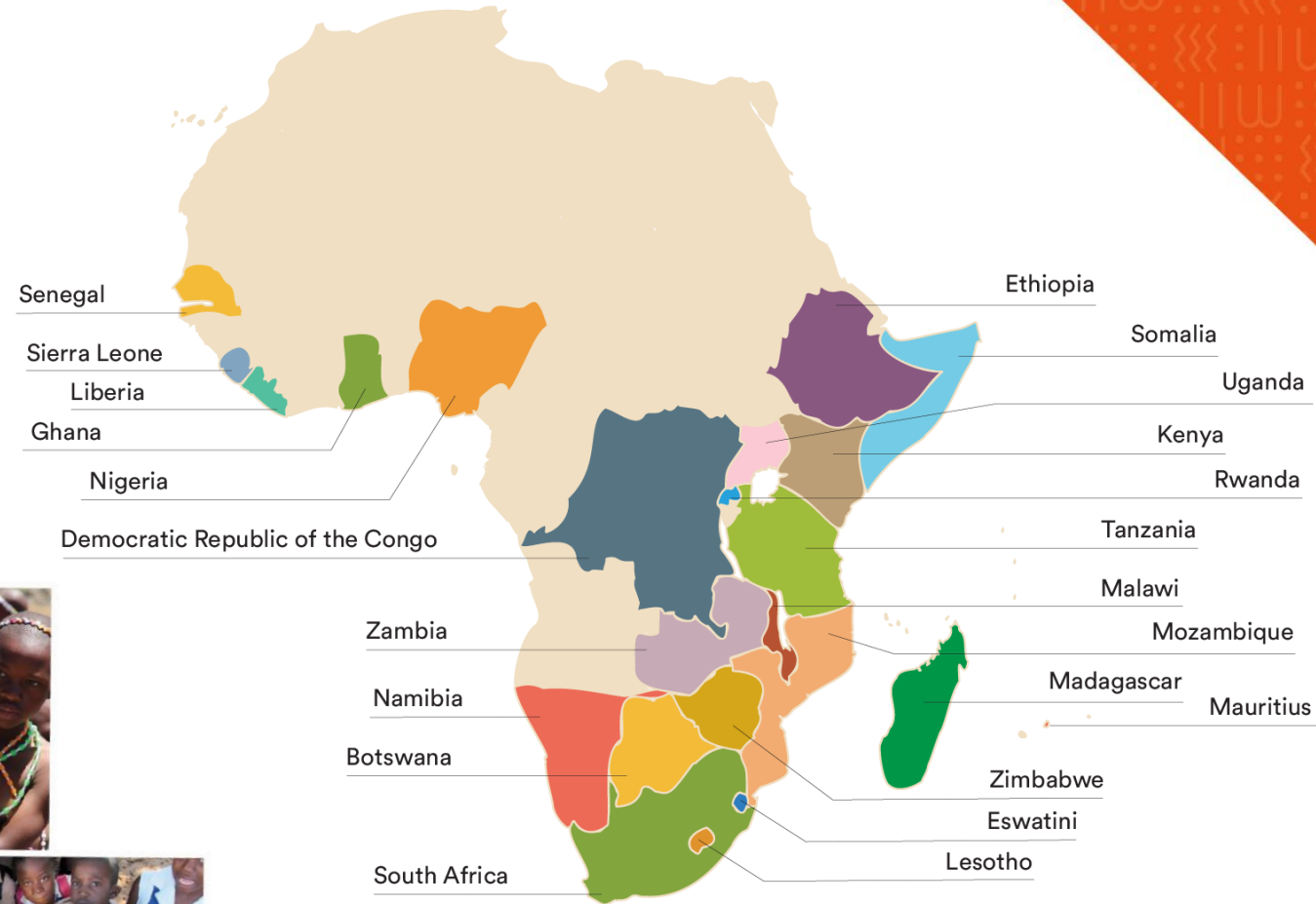
1. Degrees can become mainstream
2. Long term development of talent pool, with diverse backgrounds, that have the credentials to apply for management roles

A Social Enterprise

Delivering pioneering education across Africa. Dūcere degrees fund the ground breaking publishing, school development and scholarship work of the Dūcere Foundation, providing unique learning and leadership opportunities in 25 African countries.



In Collaboration with the Clinton Global Initiative



Dūcere Foundation operates in the following countries under MOU's with education ministries.

How to obtain PDUs for this session:

1. Scan this QR code to the Mentimeter Survey
2. Enter Your Name
3. Complete the Presentation Evaluation

If you are having issues with scanning the QR code, then either use the URL listed below or see the session facilitator or registration desk for assistance.

URL: <https://bit.ly/4dzUJt0>

